



British Wool – Sale Report

BW192 – 12th November 2024



KEY METRICS

Index	1.512	Total weigh offered:	1,160 tonnes
Average clean price:	£1.517 per kg	Total weight sold	1,160 tonnes
Average greasy price	£1.025 per kg	Clearance	100%

SALE REPORT

The British Wool sale on 12th November saw underlying prices strengthen by an average of 2% sale on sale. All core types were at least firm, with better colour carpet types generally 2% to 3% dearer, Swaledale grades traded up to 5% dearer, and Welsh Mountain grades traded more than 10% dearer. Bidding was competitive from the outset and strengthened towards the end of the catalogue, with all lots in the offer selling.

As has been the case in several recent sales, specific lots with poor test results for colour were discounted. This is a particular issue for Romney types where the colour scores have been poor this season. The sale included 30 tonnes of Organic wool from the 2023 season. This sold, but generally failed to attract a premium for the Organic status.

The average greasy price was up 2% at £1.025 / kg and the price index, which is based off clean prices, was also up 2% at 1.512. Improved prices have encouraged more farmers to send in their wool. British Wool now expects its supply to be around 7% lower in the 2024 season than in the 2023 clip year. Approximately 37% of the projected supply has already been sold.

The volumes sold and clearances by wool type were as follows:

Wool type	Weight sold (Tonnes)	Clearance	Price change
Fine	125	100%	Hoggs – Fully Firm to 2% Dearer, Ewes 1 – Firm to 2% Dearer, Ewes 2 – 3% to 5% Dearer.
Medium	236	100%	Hoggs 1 – Fully Firm, Hoggs 2 – Buyers Favour, Ewes 1 – Firm to 5% Dearer, Ewes 2 – 2% to 3% Dearer, Discoloured – Buyers Favour.
Romney	41	100%	Ewes 1 – 1% to 2% Cheaper, 3% to 5% Cheaper.
Mule	331	100%	Hoggs 1 – up to 2% Dearer, Hoggs 2 – up to 5% Dearer, Ewes 1 – 1% Dearer, Ewes 2 – Fully Firm, Cott Grades – up to 2% Dearer, Lt Grey – 1% Dearer.
Lustre	7	100%	Blueface – Fully Firm
Cheviot	46	100%	Hoggs 1 – Sellers Favour, Hoggs 2 – Buyers Favour, Ewes 1 – 2% to 4% Dearer, Ewes 2 – 2% to 3% Dearer.
Cheviot Cross	49	100%	2% Dearer
Hill	3	100%	Medium – up to 4% Dearer
Blackface	73	100%	Fine 1 – 5% Dearer, No 2 – 4% Dearer, Cotts – 2% to 4% Dearer
Welsh Mountain	77	100%	No 1 – 12% Dearer, No 2 – 15% Dearer, Coloured Kempy – 15% Dearer.
Swaledale	25	100%	No 1 – 5% Dearer.
Lamb	25	100%	All Grades – Sellers Favour
Fault, Oddments	55	100%	Oddments – 5% Dearer

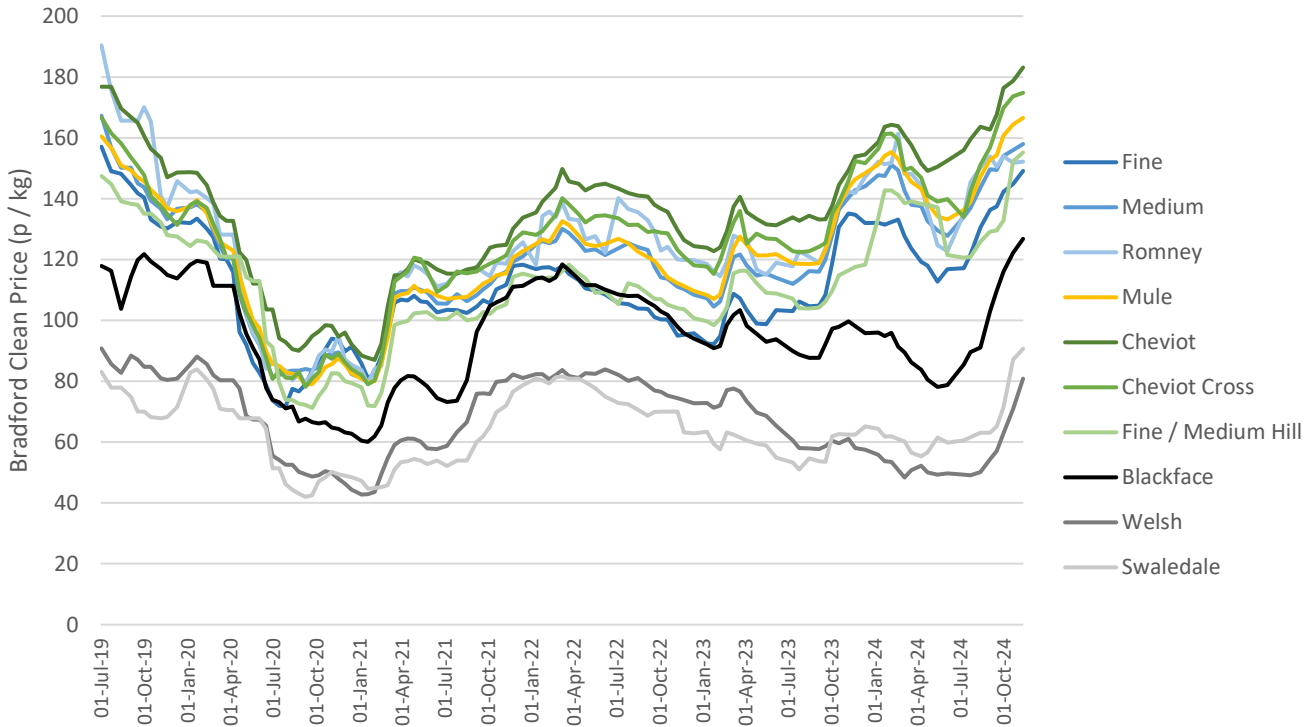


British Wool – Sale Report

BW192 – 12th November 2024



PRICE MOVEMENTS FOR KEY WOOL TYPES: JULY 2019 TO DATE



PRICE INDEX HISTORY: JULY 2015 TO DATE

